

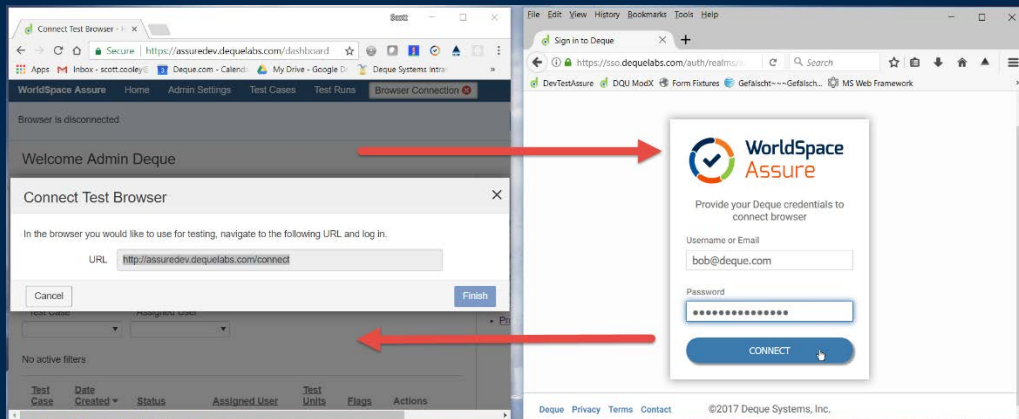


Connecting a Test Browser for Manual (and Automated) Testing in WorldSpace Assure 1.4



Quick Reference Guide

Connect a Test Browser to the Assure Control Browser for improved manual testing efficiency



Follow these steps when you want to quickly connect a test browser to the Assure control browser in order to take advantage of its efficiency improvements for manual accessibility testing in addition to enabling the optional running of automated accessibility tests.

- **Automated Testing:** Deque's WorldSpace automated accessibility rule engine tests the page or component loaded in the connected test browser for violations and returns issue results instantly.
- **Manual Testing:** Interacting with the page or component being manually tested in a separate test browser is enhanced when connected to the Assure control browser (for example, by sending the URL to load it or to interact with a form during guided testing).

To connect a testing browser:

1. Click the **Browser Connection** button in the main horizontal menu bar.
2. Click the **Connect Browser** button.
3. In the Connect Browser popup window, copy (Ctrl or Cmd+C) the highlighted text in the URL field.
4. Launch a new browser (for example, Safari or Firefox), and in its **Address** field, paste (Ctrl+V or Cmd+V or right-click>Paste) the copied URL from the virtual clipboard, then press the **[Enter]** key on your keyboard (or click the browser's Go button).
5. On the Connect Browser popup dialog box, enter your **Username** and **Password** in the corresponding text entry boxes, then click the **Connect** button.

Extension Installation Note: For first-time users, or for those using a different browser type for the first time, follow the prompts to download and install the WorldSpace Assure Extension in order to establish the connection.

6. Click the **OK** button to confirm the connection in the test browser. Messages appear in each browser to indicate connection success.
7. In the WorldSpace Assure application browser, on the Connect Browser dialog box, click the **Finish** button.

Connecting when prompted from other areas of Assure: If you do not establish a test browser connection from the header area, you will be prompted to do so when initiating via the **Start Testing** or Resume button on Test Run Overview or Checkpoint Tests screens, as required to establish the connection when Preparing a Page (or Component) for Automated and Manual Testing.

Next Step: For information about how to actually begin the manual testing of an assigned test run, see the Start Manual Testing with WorldSpace Assure Quick Reference Guide.



Digital equality. It's our mission, our vision, and our passion.

We believe that websites, mobile applications, and digital content should be accessible to people with disabilities - and we're passionate about creating technology that can make that vision a reality.



Connecting a Test Browser for Manual (and Automated) Testing in WorldSpace Assure 1.4



Quick Reference Guide

Connect a Test Browser to the Assure Control Browser for improved manual testing efficiency



Digital equality. It's our mission, our vision, and our passion.

We believe that websites, mobile applications, and digital content should be accessible to people with disabilities - and we're passionate about creating technology that can make that vision a reality.